



**RIVA RACING**  
PERFORMANCE PRODUCTS & ACCESSORIES

## Sea-Doo Accessory Mounting Bracket

RS11-170-AMB



**Applications:** 2018+ Sea-Doo RXT, GTX, Wake Pro, Fish Pro or any ST3 Platform

**Approximate Installation Time:** 0.5 Hr.

**Recommended Specialty Tools:**

N/A

**Part #**

**Required Materials:**

N/A

**Part #**



**Sea-Doo Accessory Mounting Bracket**

RS11-170-AMB

**COMPONENT LIST**

<b><u>Item</u></b>	<b><u>Description</u></b>	<b><u>Qty.</u></b>	<b><u>Notes</u></b>
A	Back Plate	1	
B	Front Plate	1	
C	Steel Button Head Screws	2	
D	Hex Key Wrench	1	
E	Sandpaper Square	1	
F	Thread Lock	1	
G	Drill Bit	1	

Your kit was inspected and verified before being carefully packaged by our staff. Please check package contents before beginning assembly. If you have a question about missing or damaged items please contact RIVA Technical Support directly at (954) 247-0705 or by e-mail at [tech\\_support@rivaracing.com](mailto:tech_support@rivaracing.com).

We strongly recommend the use of a service manual to familiarize yourself with the various components and procedures involved with this installation. Please note that some of the original hardware removed in the disassembly process will be used in the installation process. These instructions have been written in step-by-step format and refer to illustrations. Read through instructions entirely before performing installation. Please follow these step-by-step instructions and illustrations carefully.

**\*\*\* ALLOW ENGINE TO COOL COMPLETELY BEFORE PERFORMING INSTALLATION \*\*\***

**\*\*\* NO SMOKING \*\*\* NO SMOKING \*\*\* NO SMOKING \*\*\***

**Caution: Whenever using electric or battery operated tools inside the hull be sure it is well ventilated and no fumes are present. Failure to do so could result in a fire, or explosion and serious personal injury or death.**

**This kit is not intended for use on pollution controlled vehicles. Installation on pollution controlled vehicles may constitute a violation of state or local statutes.**

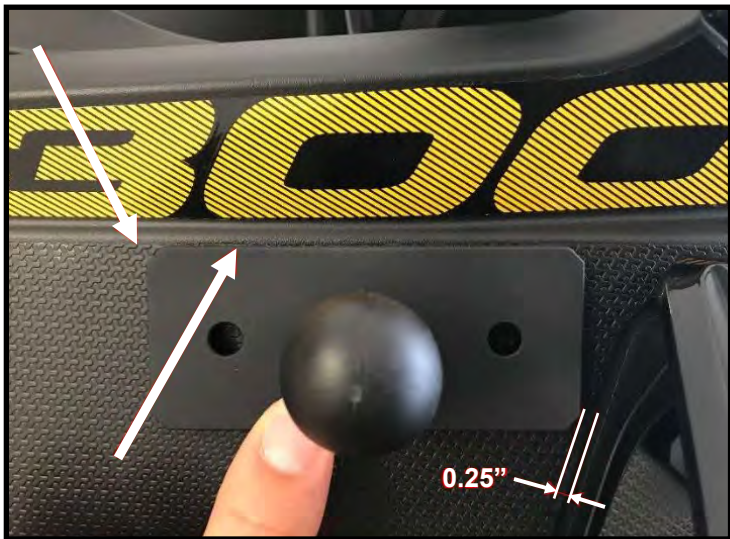


## - INSTALLATION INSTRUCTIONS -

### 1.0) Locate Mounting Bracket Position

Align top edge of front plate with top edge of textured portion of the hood side panel. Space leading edge of bracket 0.25 inches from back of mirror. **Note:** Bracket can be installed on almost any portion of the textured panel. However, for best viewing angle and rigidity the location described above is recommended.

1.0



### 1.1) Locate Mounting Bracket Position

The backing plate can be used as a hard stop to aid with consistent spacing between the mirror and the bracket. This is particularly helpful if one bracket is being installed



on each side of the watercraft.

1.1

### 2.0) Mark Mounting Bracket Position

Using a fine point marker, mark the center point of the through holes in the front plate on the textured panel.

2.0



### 3.0) Drill Mounting Bracket Clearance Holes

Drill through the panel at the previously marked locations from step 2.0. **Note:** Apply minimal and continuous pressure when drilling. **DO NOT over penetrate through the panel.**

Use supplied sandpaper to deburr holes. Check bracket fitment and alignment. If adjustments are needed, use sandpaper and/or a file to enlarge the holes in the direction needed.

3.0



### 4.0) Remove Mirror Cover

Locate mirror cover bolt.

4.0





## - INSTALLATION INSTRUCTIONS -

### 4.1) Remove Mirror Cover

Using an 8mm socket and extension, remove bolt. Save for reinstallation.

4.1



### 4.2) Remove Mirror Cover

Rotate mirror cover towards the front of the watercraft until front mounting tabs disengage from mirror.

4.2

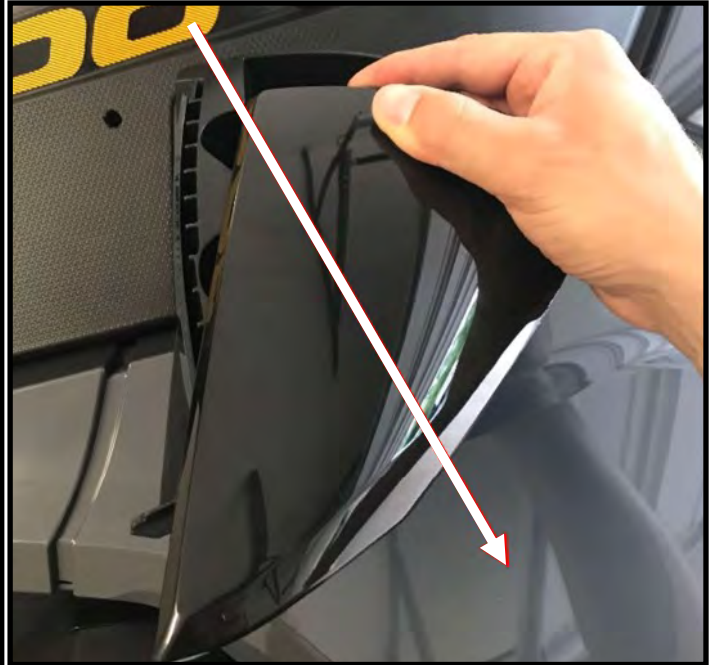


### 4.3) Remove Mirror Cover

"Wiggle" and pull mirror cover at a 45 degree angle away from the watercraft. (Figure 8) Save for reinstallation.

**Note:** Some "wiggling" and "jostling" will be needed to remove the mirror cover. The mounting tabs shown in 4.4 that secure the cover are somewhat robust. However, **DO NOT use excessive force to remove the cover.**

4.3



4.4



### 5.0) Remove Mirror Support Bolt

Locate and remove mirror support bolt using a 10mm socket. Save for reinstallation.

5.0





## **- INSTALLATION INSTRUCTIONS -**

### **6.0) Remove Top Cover**

Locate and remove two (2) mounting bolts using a T-30 Torx bit. Save for reinstallation.

**6.0**



### **6.1) Remove Top Cover**

Lift front of the top cover 45-degrees.

**6.1**



### **6.2) Remove Top Cover**

Lift the top cover straight up. Save for reinstallation.

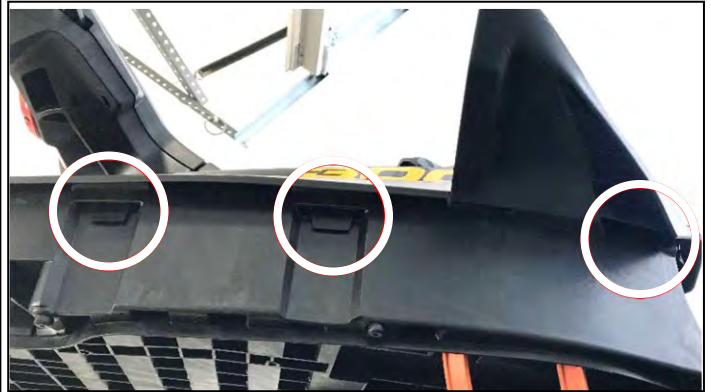
**6.2**



### **7.0) Loosen Textured Panel**

Locate the three (3) mounting tabs shown.

**7.0**



### **7.1) Loosen Textured Panel**

Pull mounting tab towards you.

Once all mounting tabs are loose. Lift up on textured panel to separate it from the base.

**7.1**



### **8.0) Position Backing Plate**

Pull up on textured panel and slide the backing plate up and under the panel. Align backing plate with the through holes from step 3.0. **Note:** It is a tight fit between the textured panel and the upper part of the storage compartment. Ensure all plastic mounting tabs from step 7.1 are loose.

**8.0**





## **- INSTALLATION INSTRUCTIONS -**

### **9.0) Secure Back Plate**

**LIGHTLY** screw front plate to the back plate.

**Note:** This is not the final securing of the bracket. **DO NOT apply thread locker to the screws. DO NOT tighten screws.** This step is to hold the backing plate only loosely in position.

**9.0**



### **10) Reconnect Mounting Tabs**

Align mounting tabs and push textured panel down to secure.

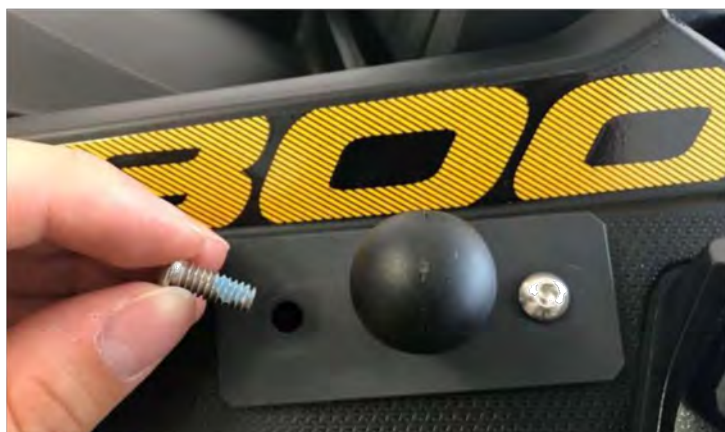
**10**



### **11) Install Front Plate**

Verify alignment of bracket with the positional requirements of step 1.0. Torque both screws to hand tight. Remove rear screw and apply a drop of thread locker. Install rear screw and torque to hand tight.

**11**



### **11.1) Install Front Plate**

Remove front screw and apply a drop of thread locker. Install front screw and torque to hand tight.

**11.1**



### **11.2) Install Front Plate**

Use a cloth and wipe away any residual thread locker from the surface of the mounting plate.

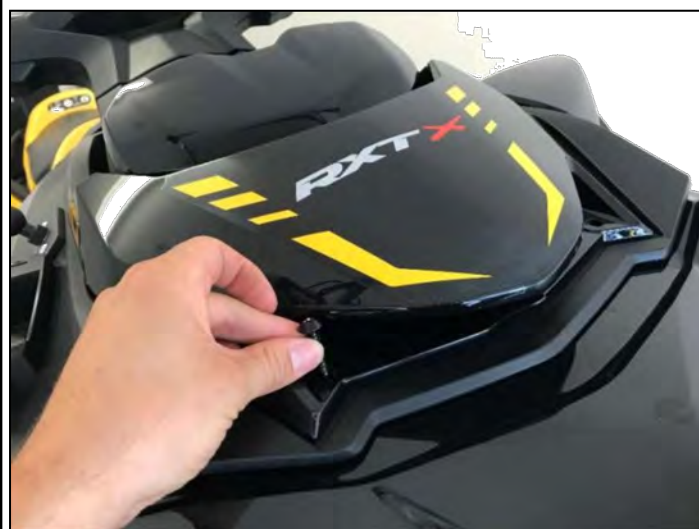
**11.2**



### **12.0) Reinstall Top Cover**

Follow steps 6.0 to 6.2 in reverse. **Note: DO NOT over-tighten.**

**12.0**





## **- INSTALLATION INSTRUCTIONS -**

### **13.0) Install Mirror Support Bolt**

Follow step 5.0 in reverse. **Note: DO NOT overtighten.**

**13.0**



### **14.0) Install Mirror Cover**

Push mirror cover on at a 45-degree angle until mounting tabs 'snap' into position. **Note:** Some "wiggling" and "jostling" will be needed to install the mirror cover. The mirror cover seats firmly on the mirror when installed correctly. Reference your watercrafts opposing mirror fitment if needed. **DO NOT use excessive force to install the cover.**

**14.0**



### **15.0) Install Mirror Cover Bolt**

Follow step 4.1 in reverse. **Note: DO NOT overtighten.**

**15.0**



### **16.0 Finish**

Using compressed air, blow off any plastic particulate that may have accumulated on the watercraft during installation. Allow a minimum of 30 minutes before submerging bracket in water.

**16.0**



Check bilge for rags, tools etc. Run craft on a flush hose to check for proper operation.

***Remember, the water belongs to everyone.  
Please ride responsibly and respect the environment!***

**Technical Support**

For answers to questions regarding installation or trouble shooting RIVA Performance Products contact:

RIVA Technical Support directly at (954) 247-0705 or by e-mail at [tech\\_support@rivaracing.com](mailto:tech_support@rivaracing.com).

**Limited Warranty**

RIVA Accessory Mounts carry a 6 month limited warranty to the original purchaser. They are warranted to be free of defects in materials and workmanship under normal use and service. Customer modified components will be void of warranty. This warranty is limited to defects in the primary components only. Finish and/or wear marks in or on primary components are not covered under this warranty.

RIVA Racing's liability is expressly limited to the repair or replacement of the components contained within or associated with this kit. RIVA Racing agrees to repair or at RIVA's option, replace any defective unit without charge, if product is returned to RIVA Racing freight prepaid within the warranty period. Any equipment returned which, in RIVA's opinion, has been subjected to misuse, abuse, overheating or accident shall not be covered by this warranty.

RIVA Racing shall have no liability for special, incidental or consequential damages or injury to persons or property from any cause arising from the sale, installation or use of this product.

No other warranty, express or implied, including, but not limited to the implied warranties of merchantability and fitness for a particular purpose, applies. Various states do not allow for the limitation of incidental or consequential damages and therefore the above exclusion or limitation may not apply to you.

Warranty does not include the expenses related to freight or transportation of parts or compensation for any inconvenience or loss of use while being repaired. A copy of the original invoice and a Return Authorization Number (RA#) must accompany all warranty claims.

Warranted replacement parts will be returned freight collect.